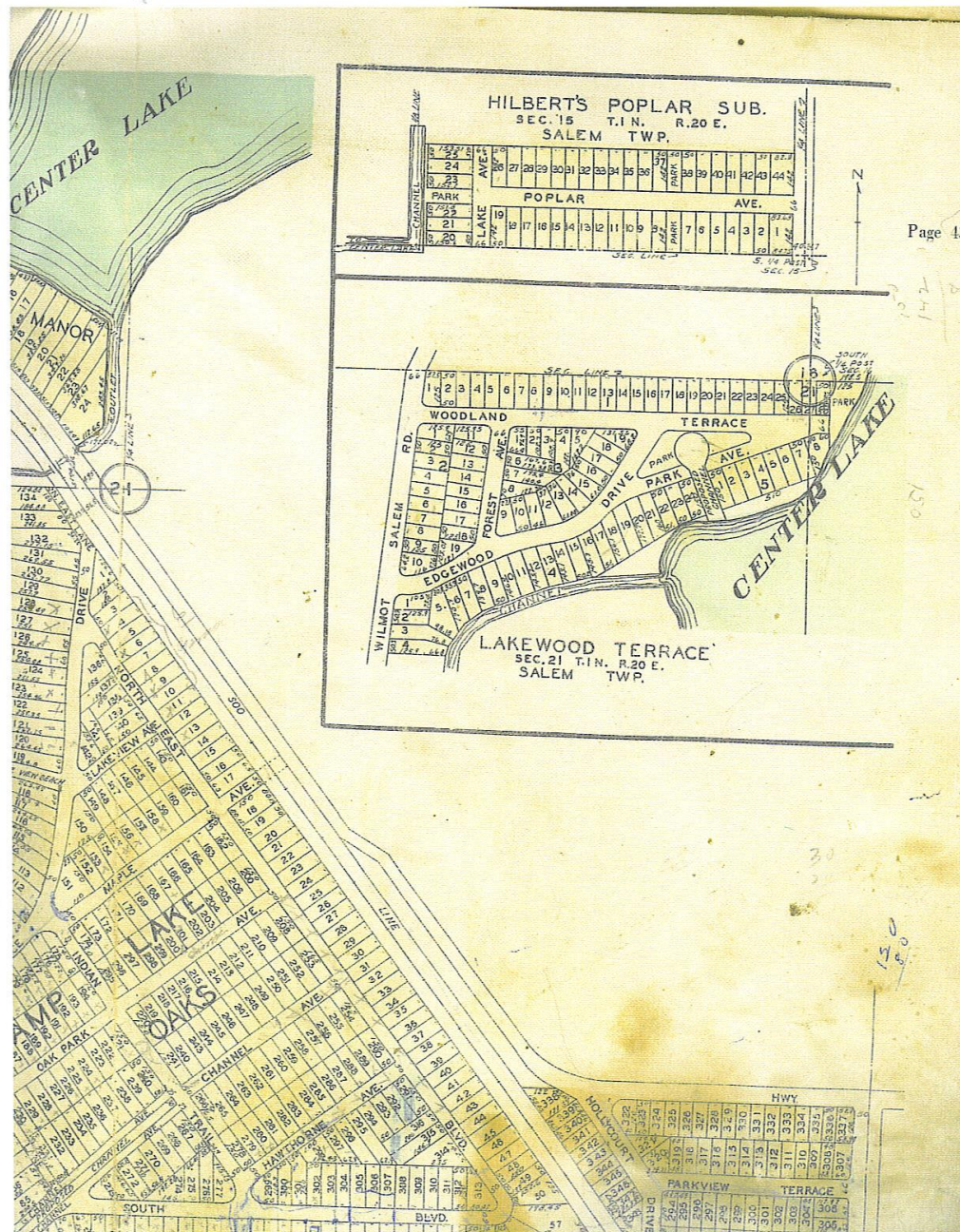


~ 1930 October 5 1930 Meeting held at Larwin's Hotel Camp Lake Wisconsin for the purpose of Election of Directors and Confirmation of Resolutions proposed by the Committee appointed for the building and operation of the proposed Dam at Camp Lake Wisconsin the following being the Directors: A H Kraus representing A H Kraus Realty CO, R C Abt, J C Parks representing Oak Ridge Subdivision, H J Baur Riparian Owner, C F Kerbs representing Shoreview, W T Larson representing H Barstow Sunset Oaks Manor, Frank Larwin, Chas Oetting, Frank Yaw riparian owners, H C Adams representing Camp Lake Oaks, Mr Raymond, F J Meyers, Mr Whitmore all of Camp Lake Wisconsin, R Barron Chairman, C F Kerbs Secretary.
SIA19271959-87



ii lakemanorRAYMONDSCAMPLakeCLOAKES1931



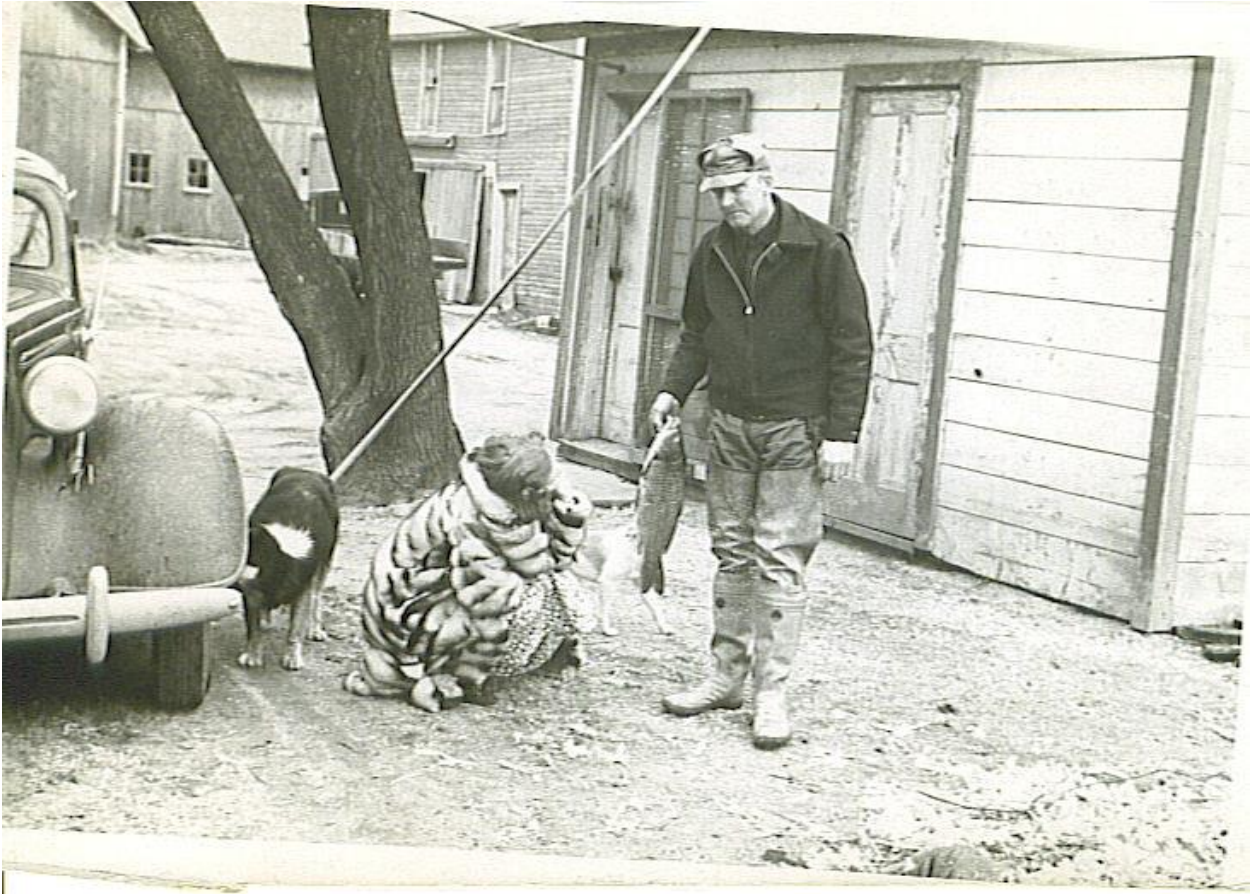
ii hilbertspoplarsubLAKEWOODTERRACEcenterlake1931

~ 1930 October 15 1930 The Share of the cost of the Camp Lake Dam near Wilmot Road aka HWY C for Shoreview will be \$250.00. SIA19271959-89

~ 1930 November 7 1930 Public Service Commission established the minimum level to be 740.60 feet and the temporary maximum to be 741.10 feet and that the association have the responsibility for construction of the dam (eastern spillway), rescinding the permit given to Mr Kraus on 02 11 1930. CCLRD1-151

~ 1931 January 10 1931 Camp Lake Water Level Association has received permit by the Railroad Commission of Wisconsin to proceed with construction to be done with James W Anderson Company Engineers to do the necessary work. SIA19271959-91

~ 1931 July 28 1931 Shoreview writes to the State Conservation Commission and asks them if we can stock the lake and if we could get the fish from the government and also asks if the Carps could be removed from Camp Lake. SIA19271959-103



ii RWB 1940apxCharles Breul uncle to Bob with his catch from Camp Lake



ii The Cwiks



ii vrs JULY 27 1927 NOTH for vis SURE perhaps MR Ray back days CATH CH at OR VIS center LAKE resort



ii vrsjuly151927daysCATCHatORVISresortONcenterLAKEEverleswensoninfrontwithHAT



ii vrsgrandmajanORVISHarryBEHINDandtwo visitorsonRIGHT

~ 1931 July 28, 1931 Shoreview subdivision assessed \$20.00 per homeowner and \$10.00 per lot owner to be paid to the Camp Lake Water Level Association for the DAM. SIA1927-1959, 103

~ 1931 July 31 1931 SIA writes to State Conservation Commission Madison, states "the lake is now filled with Carp, Garfish and Dogfish".
SIA19271959-107



LOTS OF THESE

THE RAYMONDS, CAMP LAKE, WIS.

ii 1921apxthe raymondscampLAKEfish

~ 1931 July 31, 1931 Lake is filled with Carp, Garfish and Dogfish as noted in a note to the State Conservation Commission in Madison Wisconsin and Shoreview Association asks if the lake could be stocked with fish. SIA19127-1959-107

~ 1931 August 3 1931 State of Wisconsin Conservation Commission B O Webster Supt of Fisheries replies that "owing to the shortage of finances, the conservation commission has withdrawn the appropriation for the removal of rough fish in the northern part of the state, which makes it impossible at the present time for us to do any rough fish removal work". SIA19271959-106

~ 1932 November 7 1932 Camp Lake Water Levels Association formed a corporation to maintain the water levels of Camp Lake and building and maintaining and controlling a dam in connection therewith. by the Department of State, Secretary of State Theodore Dammann CCLRD1-1

~ 1932 December 29 1932 Camp Lake Water Level Association is granted permit to raise and enlarge its dam by inserting stop log gates in the dam so as to maintain the crest of the dam (eastern spillway) at the maximum elevation of 741.60. CCLRD1-151

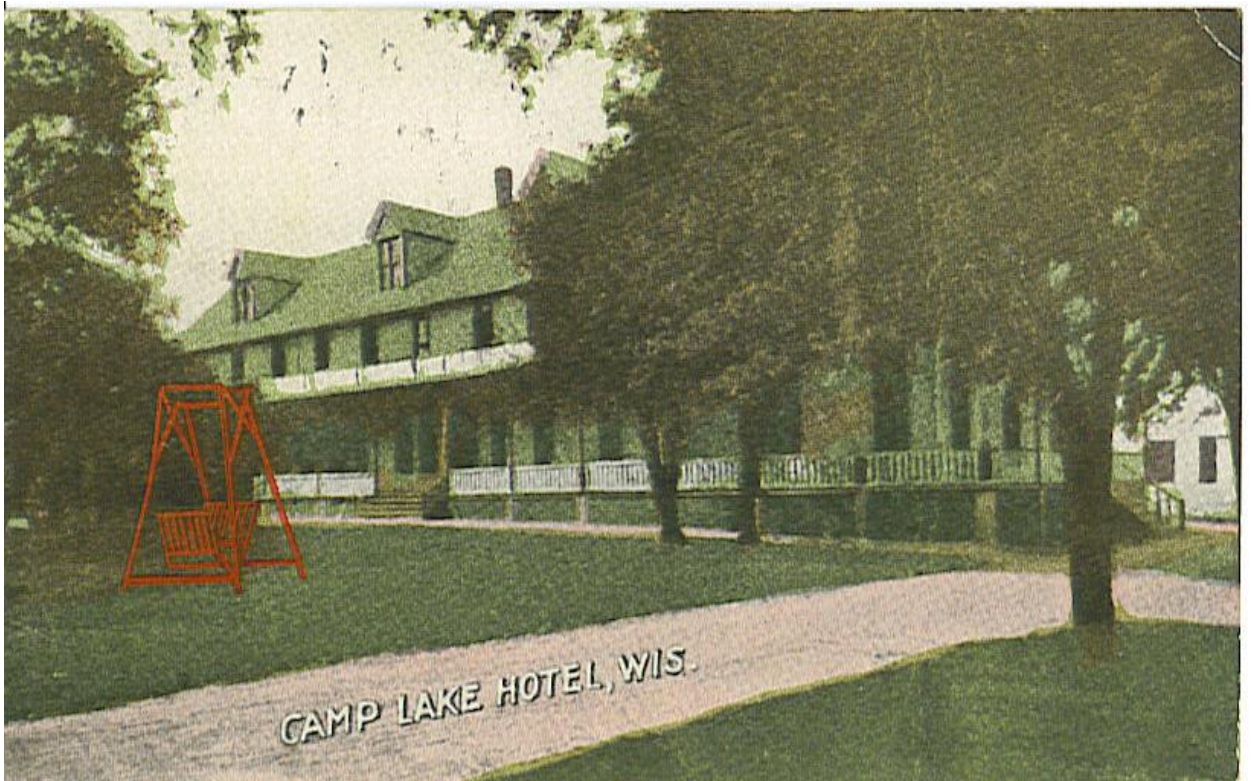
~ 1934 August 30 1934 on Preprinted Letterhead Camp Lake Water Level Association Incorporated, Trevor Wisc (which includes preprinted Board of Directors Listing and Officers listing) sends thanks to G Corduan for his efforts and contributions. SIA19271959-110



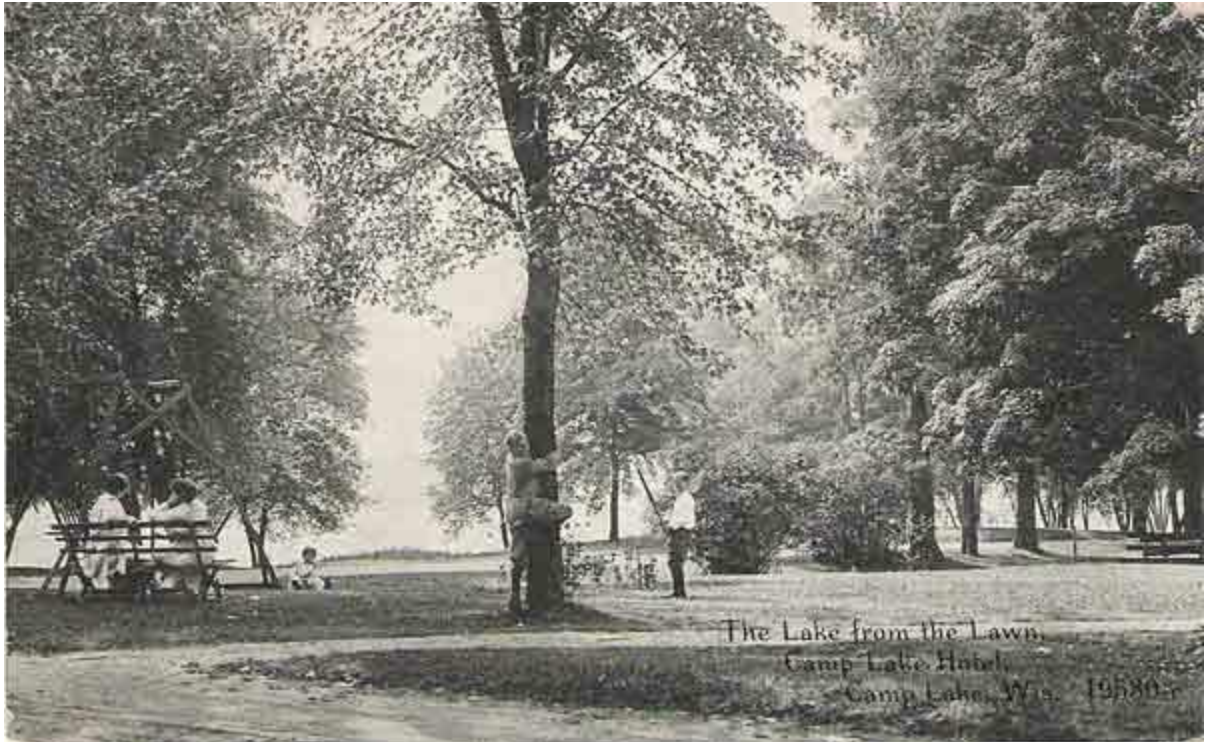
ii 7

~ 1934 Camp Lake Hotel in its several disguises - THE RAYMONDS and more commonly called THE BIG HOTEL or the APARTMENTS in CAMP LAKE made an appearance very early, perhaps in the 1890's and has continued to contribute to the recreational use of Camp Lake. Prior to the mid 1960's, the AH roadway

did not traverse as close to the porch as we now see, but bent towards the lakeshore and then angled back to the intersection that now exists at the rail crossing.



ii jcr 1916campLKhotelcolorizdminnietoMissLINDAradloff 618 23rd st milwaukee1centA



The Lake from the Lawn,
Camp Lake Hotel,
Camp Lake, Wis. 19580-r

ii wiscomplakehotel1920

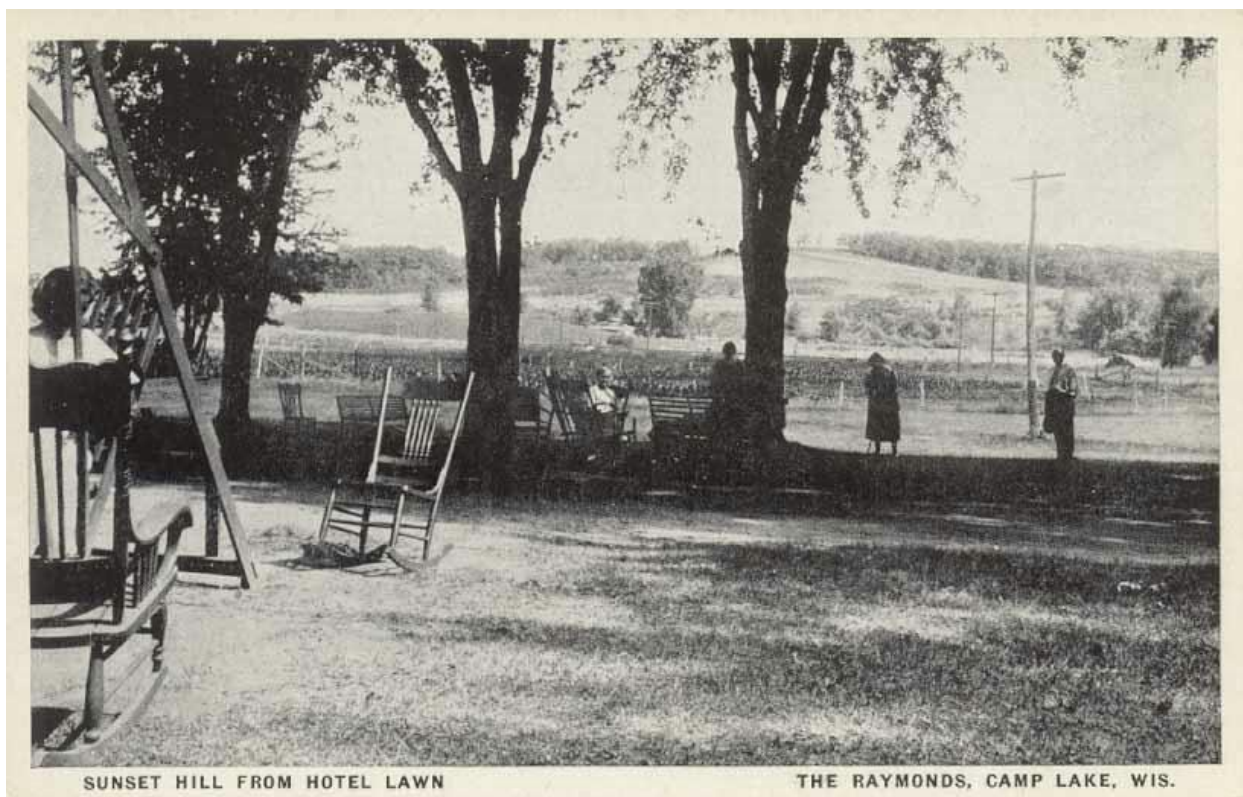


AT SKATING AND SKIING TIME

THE RAYMONDS, CAMP LAKE, WIS.

ii jcr

1934atskatingandskiingtimetheRAYMONDScamplaketoMMwallace5927NkennethchicagoILbyjoannaonecentA



ii raymondHOTELcampLAKE



ii whaCAMPlakeWIhotelSUNjune021918DonnaEllaDeliaRonaldUNKNOWNlurname



ii jcr

view from LAKESIDE towards Current BEACH above RIGHT boat on CAMPlake BOATS with forest green numbered some HO
 USES in CAMPlake OAKS II COOK 235c



ii rwc LakesideResort CampLake butOAKSis also noted



ii 62905campLAKEhotelLOOKINGtowardsNORTH6205

~ 1937 records begin regarding the stocking of Camp Lake with Northern Pike, Perch, Largemouth bass, bluegill, shiners, perch, bullhead fingerlings, fry and adult thru and including 1980, CCLRD1-225, 226

~ 1937 records begin regarding the stocking of Center Lake with Northern Pike, Perch, Largemouth bass, bluegill, shiners, perch, bullhead fingerlings, fry and adult thru and including 1991, CCLRD1-228, 229



ii JCR Joan and Bass Center Lake october 1981



ii JCR ROB and CenterLakeCatFish



ii JCR Rob Dec 1988 and Northern or Pickeral



ii JCR aug 1976 Rob and Northern or pickeral

~ 1939 August 13th 1939 Shoreview Improvement Association hires Mr Hoffner of Silver Lake to cut weeds and rake them up onto the shore from the channels in the Subdivision at a rate of \$25.00 a day for two days with cutter and two men. SIA19271959-114

~ 1939 August 20 1939 Robert Abt and Mr Edgar in letter to Walter E Corduan of SIA to quitclaim the

'association' property to the Shoreview Improvement Association which includes one foot at the east side of the association the shoreline property and the northern part of the road extending north from what is commonly known as East End Road as well as Lot 1 in which a channel is dug adjacent to the Peterson Property (not to be confused with the Peterson property at the North end of 2006), and quitclaim and give outright, the weed cutter; recorded November 1 1939. SIA19271959-123, 124, 287

~ 1940 approximate, a notice is received by SIA that there is a Salem Township Association of Subdivision Residents that meets or will meet on the first Sunday of each month throughout the year to conduct business of the Association and the Annual meeting is held on the second Sunday of July. Chairman Edith M Roselius, Richard Nuyttens, Mr C E Lovewell, Gilbert Elsfelder. SIA19271959-145

~ 1940 July 7 1940 Shoreview holds a CARNIVAL at the Shoreview LAKEFRONT Archery, Baseball, Hotdogs, Race Horse, Paddle Wheel, Bar, Bingo, Penny Pitch, Slot Machine (they made \$121.85), Beer and Pop, Beer Glass Rental, Popcorn, Cigars, Bacon, Frankforts, L J Thebault for merchandise and music, ice cream, and one ham donated by Mr A Dahl Trevor Store. SIA19271959-142, 152

