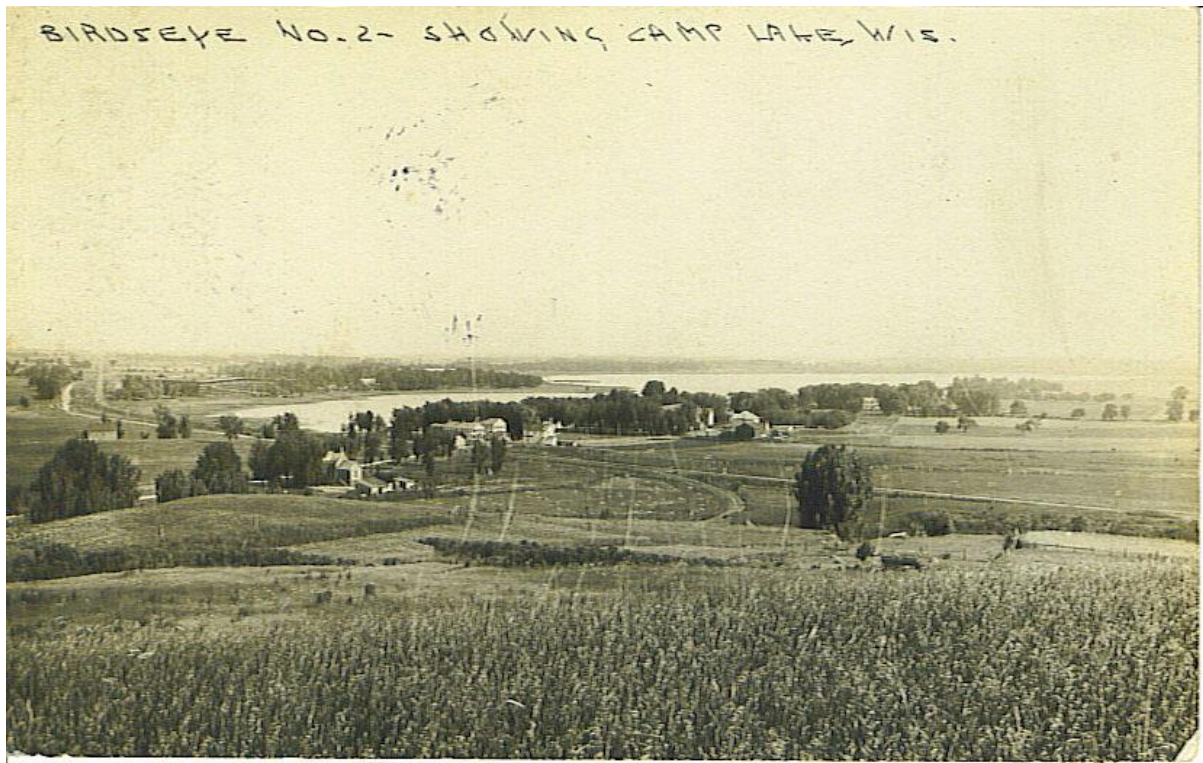
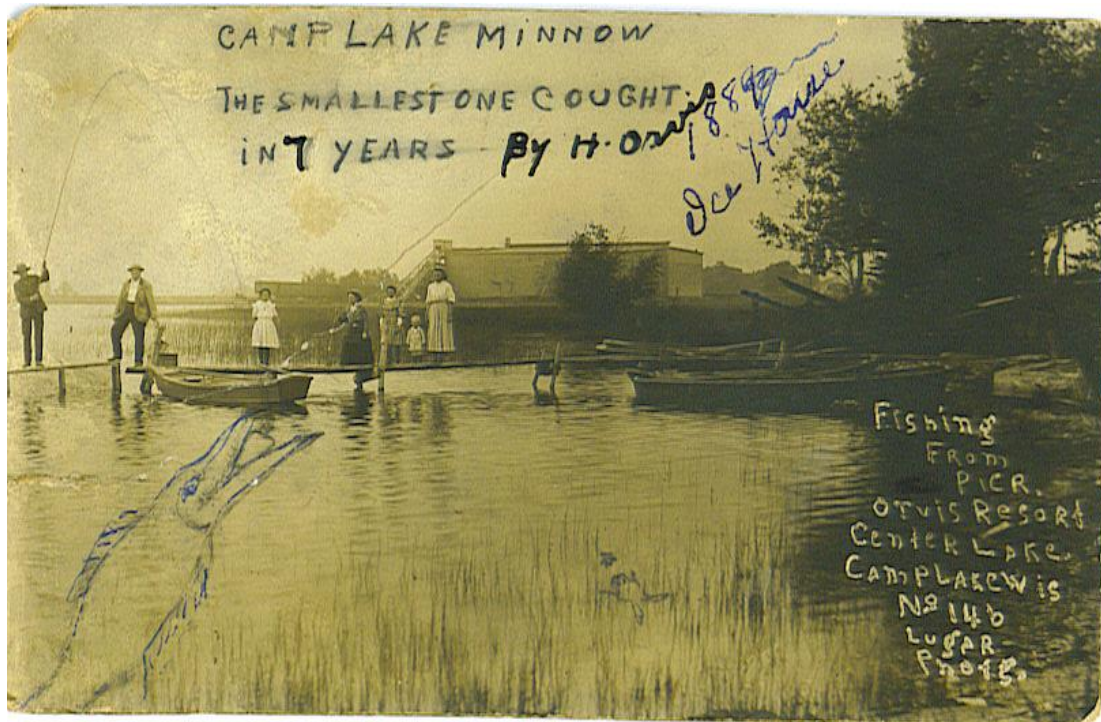


ii 1908salemTOWNSHIPbwOverview



ii FAD 1921

CampLake1centPLHuckins1137BarryAveChicagotoMrsAnnaDietrich3948WbelmontChiBirdseyeviewCampLakeIceHouseA



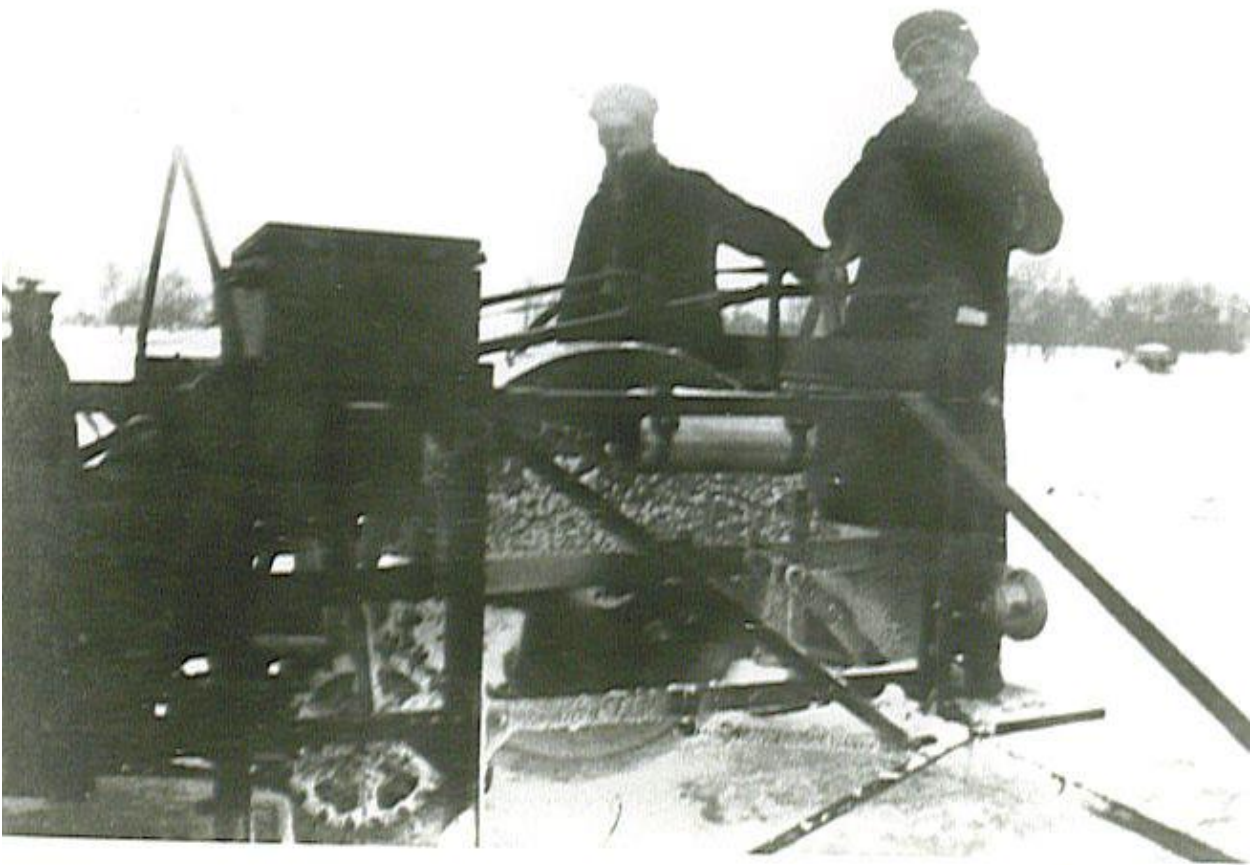
ii vrsFISHINGfromPIERorvisRESORTLUGARphotog1889ICEHOUSEjustNOoftracks PERHAPSmr
MEYERsownedii



ii TABoBCAMPlakeICEhouseINDistanceROWboatD



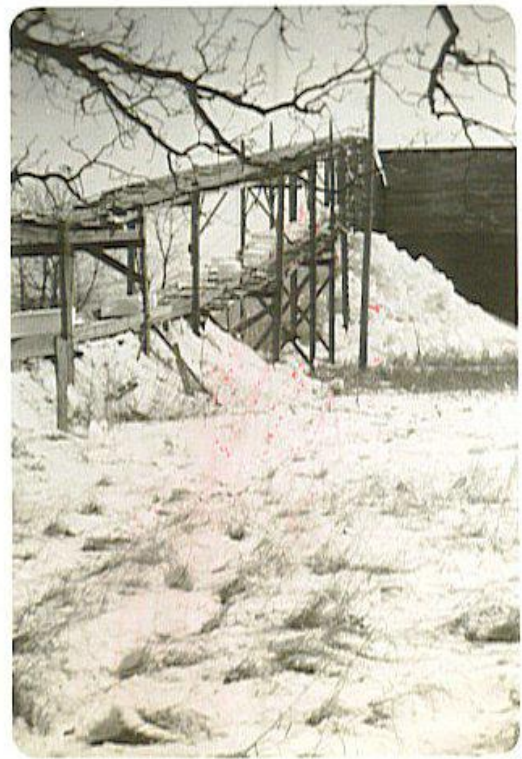
ii TABoBcamplakeICEtoICEhousehelen cavanaughC1



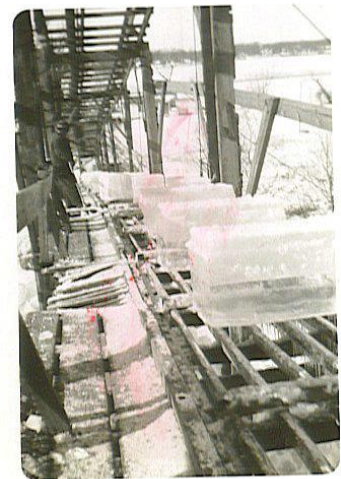
ii TABoBcuttingICEonCAMPlakehelen cavanaughA1



ii TABoBCAMPlakeICEcuttingB



ii whsICEharvestingPANELartSNAPshotsRockfordPHOTOsponBYalPaddockat53168C1



ii whaICEharvestingPANELartSNAPshotsRockfordPHOTOsponBYalPaddockat53168B1

~ 1909 Wisconsin Central leased to the Soo Line,
tracks that ran thru the isthmus between Camp and
Center Lake Travellers would exit the train and see at

the first, the Camp Lake Tavern, the Dew Drop or Yaws Place, Lambs/Lakeside or walk thru the trellis to the Camp Lake Resort and Gardens or travel north to Salvation Army Wnderland. (Mounted Map at Lakes Region Museum and 2005 Commentary by FAD).



ii IMG_0178 pre 1909 map on wall at lakes region museum 8-7-2005 3-01-16 AM 3456x2304

July 1st, 1909

Primer 168

Rapid

DESCRIPTIVE

Comfortable

Service de Luxe

Copyrighted 1906 by W. R. Callaway

SOO-ATLANTIC
SOO-WINNIPEG
SOO-PACIFIC
SOO-SPOKANE
SOO-PORTLAND
Twin Cities-Chicago
CHICAGO-SUPERIOR
DULUTH
ASHLAND

THROUGH CAR
ROUTES

E. PENNINGTON, President
W. L. MARTIN, 2nd Vice-Pres. & Traffic Manager
W. R. GALLAWAY, Gen'l Passenger Agent

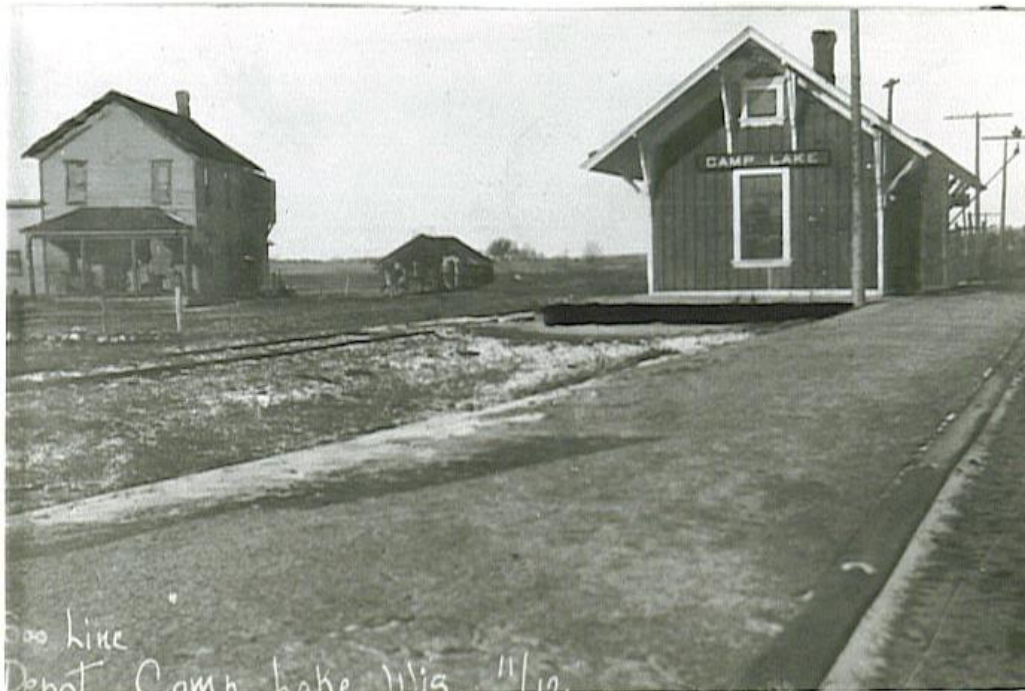
Twin Cities

Via the Comfortable Route

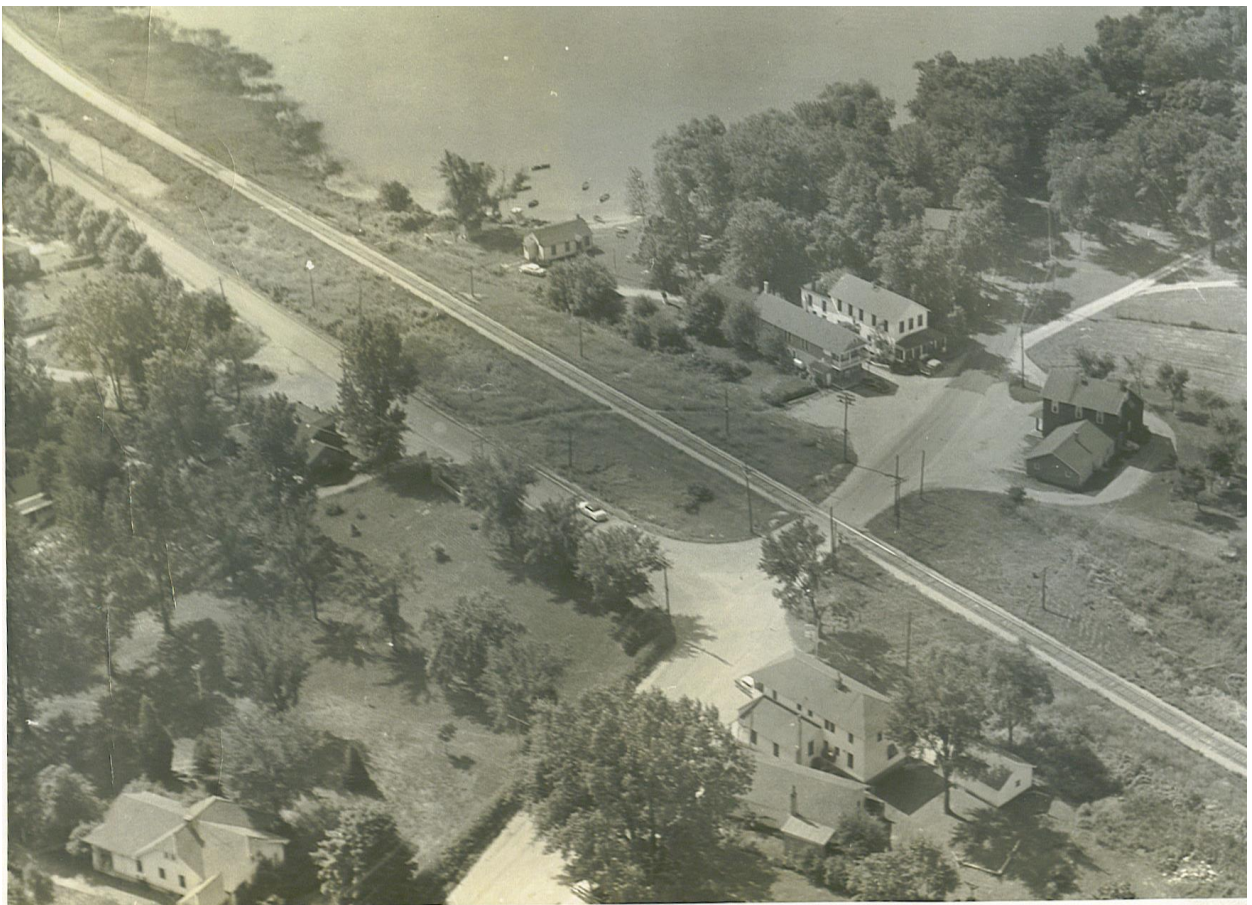
TO

Milwaukee, Chicago and the East

East Bound Miles from Minn'p's	STATIONS	West Bound Miles from Chicago
0	Minneapolis The Chicago Line of the Soo Line has many things to commend it to the traveller to Chicago, Milwaukee or to any of the many beautiful summering places to be found east of the Twin Cities along the line. The way is through the beautiful Minnesota Country to the Wisconsin Line, where the St. Croix River is spanned by a mighty bridge. Through Wisconsin the line runs through an agricultural country that is fast becoming known as some of the best farming lands in the entire western country. The heavy timber which for so many centuries has covered the land is fast disappearing and in its place the landscape is becoming dotted with splendid up-to-date farms and fine buildings for the Wisconsin farmer always prospers.	476
10	St. Paul—	465
50	New Richmond	426
116	Chippewa Falls	360
127	Eau Claire	371
170	Abbotsford	306
192	Marshfield	284
224	Stevens Point	252
252	Waupaca mighty muskalonge, which often grows to a weight of over forty pounds is also a prime favorite. Waupaca, Wis. is one of the most noted of the vacation spots within easy reach of either Chicago, Milwaukee or the Twin Cities.	223
287	Neenah	189
299	Oshkosh	177
317	Fond du Lac	159
375	Milwaukee	
	Waukesha The lakes at Waupaca are over twenty in number and form a chain of several miles in length. The irregular shores with their hard sandy beaches tempt the lover of bathing while the launch or canoe owner finds the place ideal for cruising. There are many other beauty spots including Stevens Point, Fremont, Fond du Lac, Oshkosh, Cedar Lake, etc. Waukesha, Wis. is famous for its wonderful water, which is shipped all over the country. Waukesha is a city of beautiful drives and handsome residences and the hotel accommodations are of a high order. There are several lakes nearby and the Fox River flows near the City. Resthaven, at Waukesha opens for business July 15, 09. This model fire proof structure is built upon an elevation which commands a splendid view of the entire surrounding country. A competent staff of medical specialists representing the best talent in Milwaukee and Chicago will be available. The line to Milwaukee branches off from the main line at Rugby Junction but through sleepers are operated daily between Milwaukee and the Twin Cities. Chicago, the second city in size and importance in the United States is reached in the morning after a fast, comfortable, enjoyable run on a perfect train.	100
387	Mukwonago	89
400	Burlington	75
411	Silver Lake	64
413	Camp Lake	62
422	Lake Villa	54
476	Chicago	0



ii TABoBCampLAKEdepotDewDROPmeatMARKlookingSOWest



ii skhCAMPlakeaerialfromsunsethillsansDEPOTwithORIGINALahROADWAYnotated



ii skh 1909 CAMPlakeFROMsunsetRIDGE



ii vrscampLAKEtavern1948NWcornerCAMPlakeRDatSA



ii aa Pardon perhaps YAW and lakesidehouses by JeanetteRAYMOND



ii whs 1913YAWsPlaceCAMPlakeAKAdewDROPINsunsetHILLa



ii abb

1925apxKenoshaMark1centMrsJulian2DrStouenbergAkronIowaDewDropINGeorgeJJankpropCampLk
HotelBuffetTHISwaayONEblockGardensAHroadicecreamLawnA



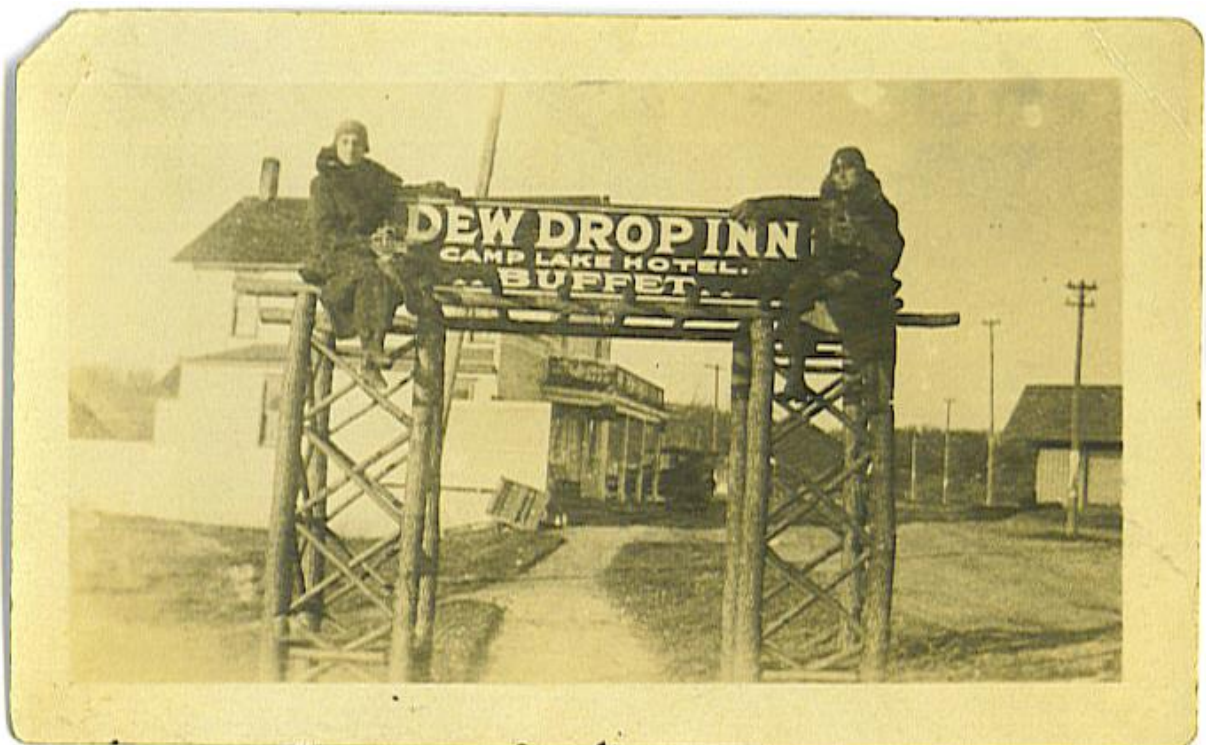
ii artisansBUILDINGmoved2times62005 2 6-29-2005 3-35-58 PM 2304x1728



AT SKATING AND SKIING TIME

THE RAYMONDS, CAMP LAKE, WIS.

ii abb 1921apxAtSkatingandskiingtimeTheraymondsCampLkWisshowingArtistbuildingto the
SouthsideofHotel58318



ii dgJ dewdropINarborWITHbuffetandCAMLakeHOTELdepot2right



ii abb 1926CampLakeWisHato2AuntGussieMrsCHDoolittleChioncampLkHotelCampLkWis19533A



ii campLAKEhotelLOOKINGtowardsNORTH6205 1 6-29-2005 3-35-08 PM 2304x1728



Lake View from Lake Side Resort, Camp Lake, Wis.

ii skh camplakeviewlookingSOfromlakesideresortONEsmallcottageICEhouseatwatersEDGE



MAIN BUILDINGS, FRITCH & KRACMER HOTEL, CAMP LAKE, WIS.

ii abb 1925StopALittleMain

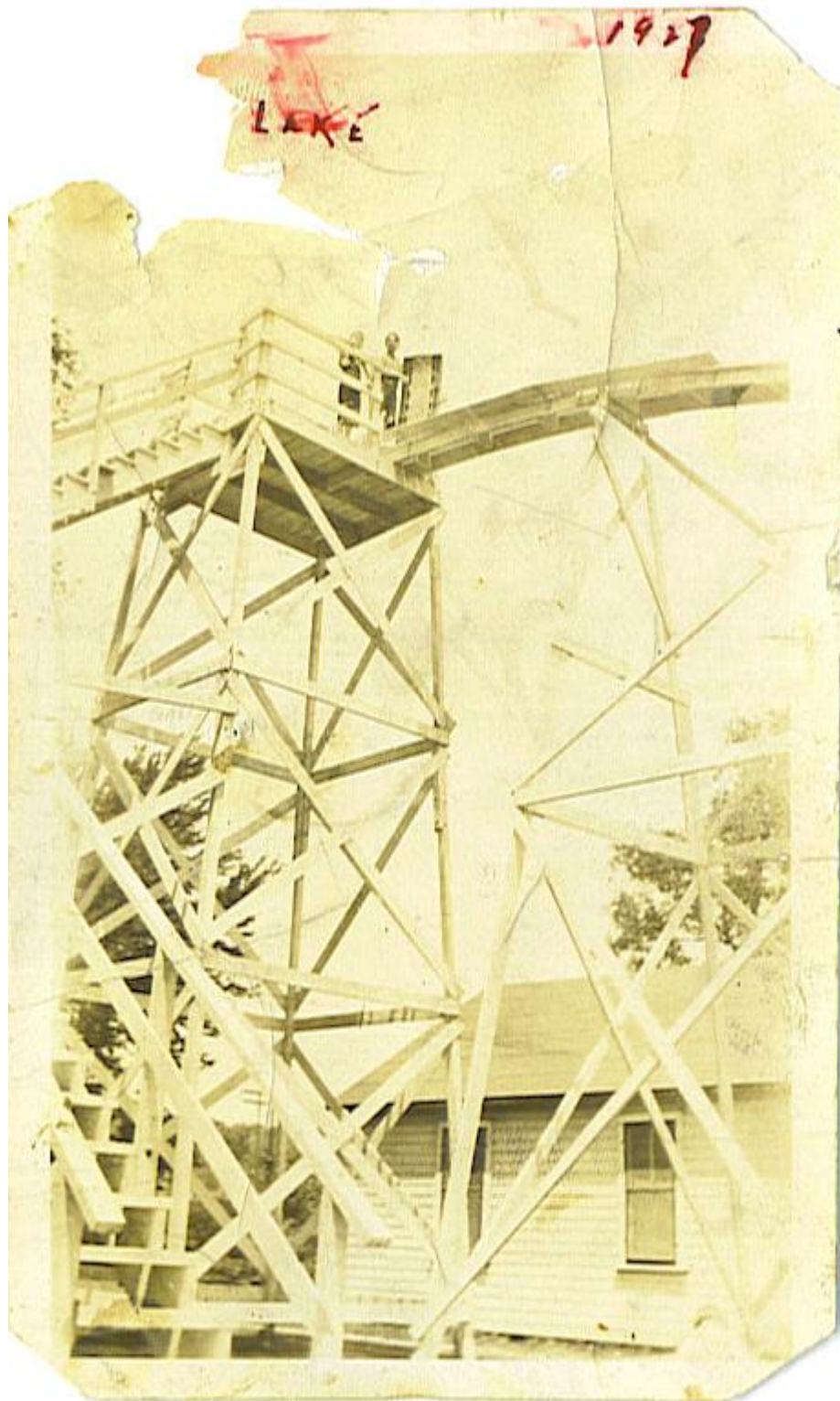
BldgsFritchKracmerHotelCampLakeWIadelightfulPlacetospendyourvacation2blgsPeople58991



ii TABoB1986VITOsTavernSOeastCORNERSaANDCLrd



ii skh LakesideresortloookingNWesterlyTOWardsTRACKSlargeCOTTAGEandSLIDE

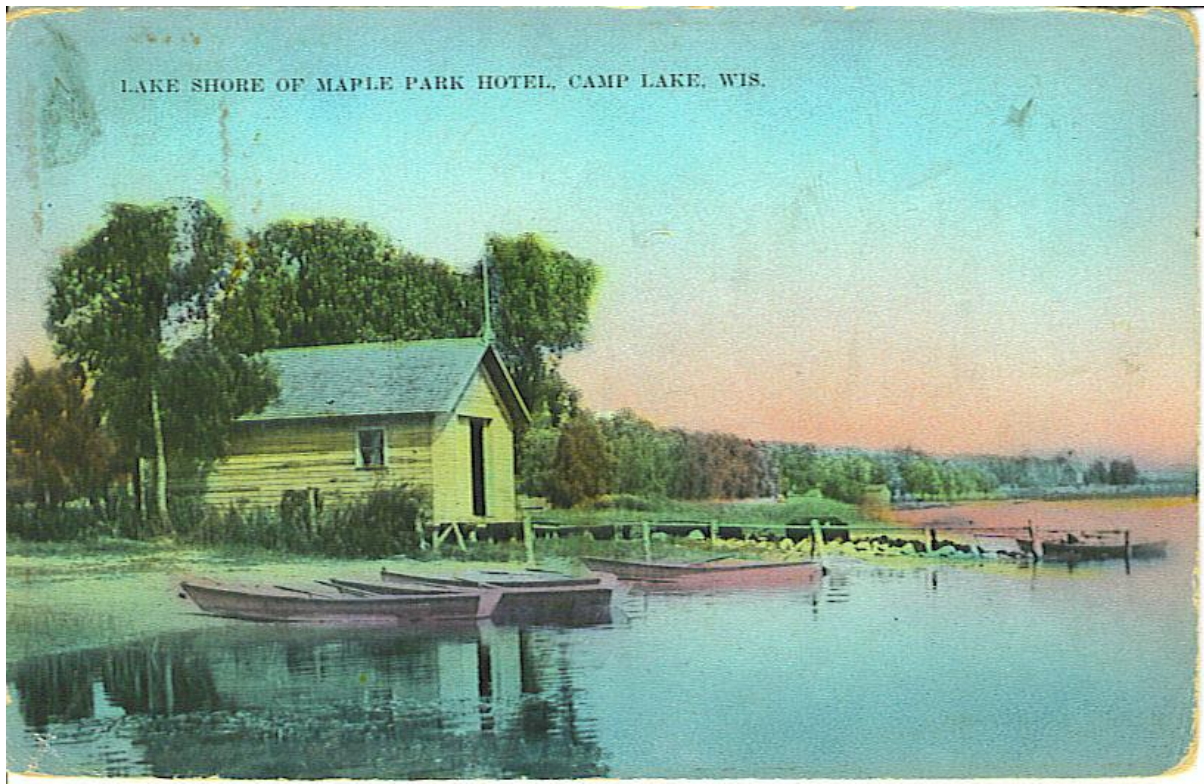


ii skh SLIDEatCAMPlakeLAKESIDEresortNOTICEtobogganlikeSLIDEwithWHEELS

~ 1910 Boat House at the lakeshore of the Maple Park Hotel on Camp Lake south of McVeys aka Camp Lake Hotel and the contemporary house of 2005; The sailboat image shows the houses to the south of the old boathouse.



ii FAD 1910perABBcardCampLakeNearMcVeysLugarAntiochNo107



ii abb 1910campLKwis1centunknownsender2MrsJMatimoreCHicagooncolorized
LakeshoreofMapleParkHotelCampLKwisA



ii IMG_0834 boat house west side of camp lake 9-3-2005 5-01-55 PM 3456x2304



ii IMG_0829 boat house west side of camp lake 9-3-2005 5-01-33 PM 3456x2304